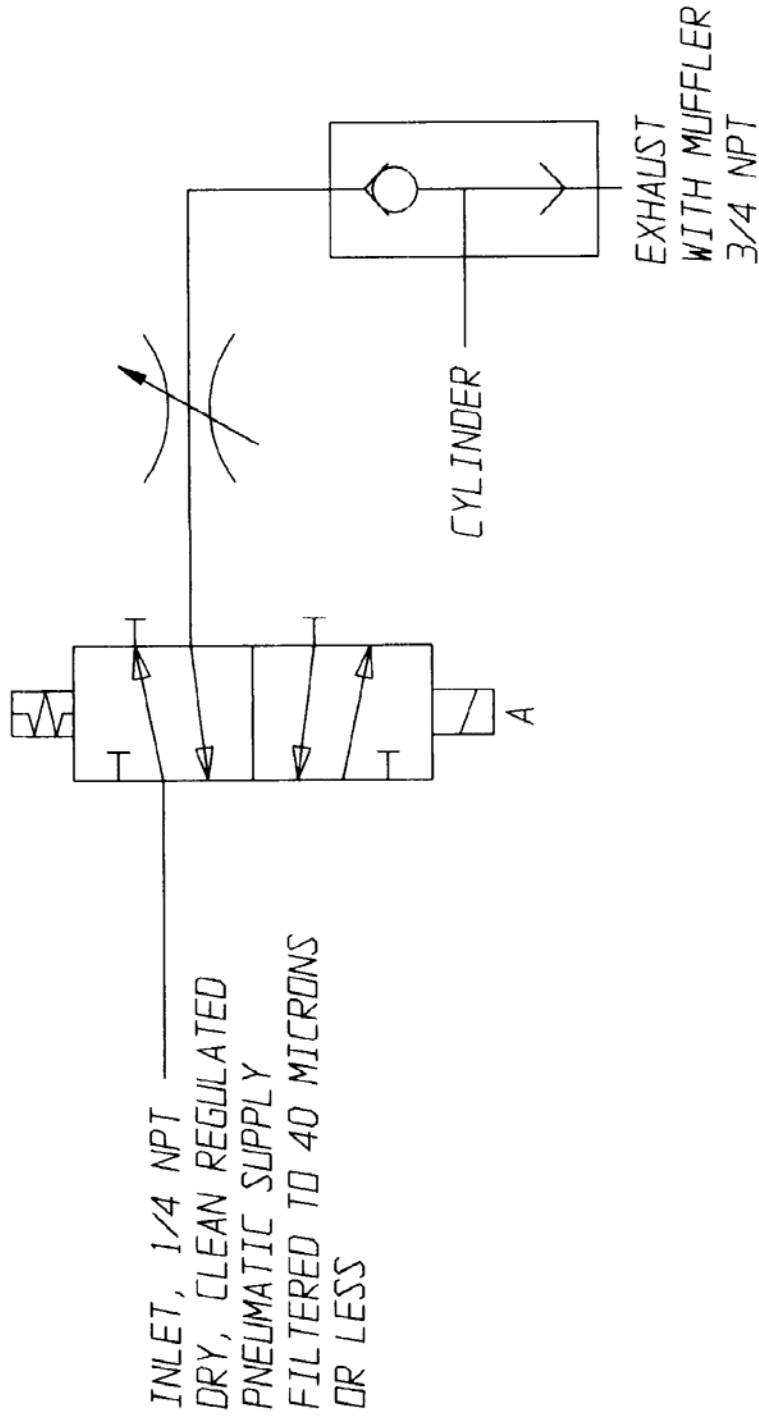


THIS DOCUMENT IS THE PROPERTY OF ITT ENGINEERED VALVES AND IS LOANED SUBJECT TO RETURN. IT IS ISSUED IN STRICT CONFIDENCE AND SHALL NOT BE REPRODUCED, OR COPIED, OR DISCLOSED IN WHOLE OR IN PART, OR USED AS THE BASIS FOR THE MANUFACTURE OR SALES OF APPARATUS WITHOUT THE EXPRESS WRITTEN CONSENT OF ITT ENGINEERED VALVES.



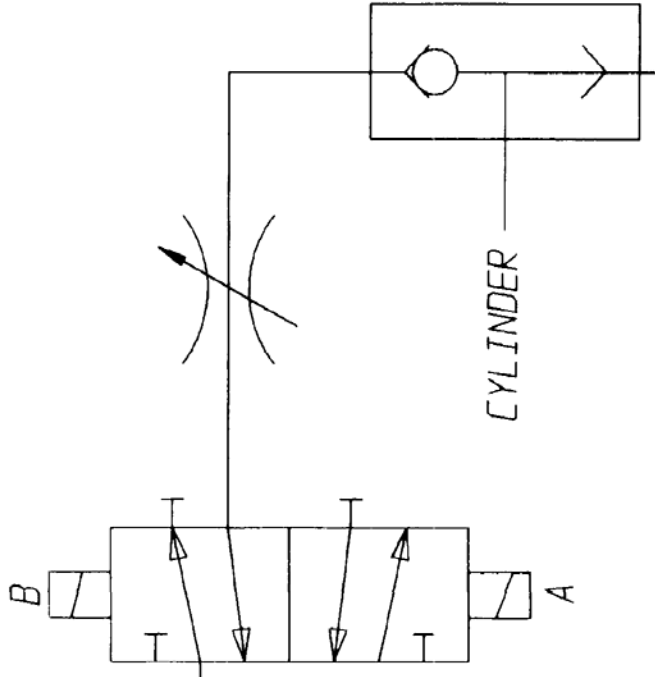
ECN#2515

PART NO. -

PATTERN NO. -

| | | | |
|---|----------|----------------|--------|
| ITT Engineered Valves ITT Fluid Technology Corporation Lancaster, Pa SHEET 1 OF 1 | | REV | - |
| | | SIZE | A |
| PNEUMATIC SUPPLY GAS BURNER VALVE T4200 - T4600 VERSA SINGLE COIL | | DRAWING NUMBER | 117473 |
| - - SUPERSEDES:- | | | |
| TOLERANCES EXCEPT AS NOTED | WEIGHT | SCALE | |
| DECIMALS | - | NTS | |
| .XX ± .02 | DATE | BY | |
| .XXX ± .005 | 10/28/97 | JDN | |
| ANGLES 40, 50° | CHKD | 10/24/97 | MHC |
| REMOVE ALL BURRS | APVD | 10/24/97 | MHC |
| AND SHARP EDGES | | | |
| ALL MACHINED | | | |
| SURFACES TO BE | | | |
| 125° EXCEPT AS | | | |
| NOTED | | | |

THIS DOCUMENT IS THE PROPERTY OF ITT ENGINEERED VALVES AND IS LOANED SUBJECT TO RETURN. IT IS ISSUED IN STRICT CONFIDENCE AND SHALL NOT BE REPRODUCED, OR COPIED, OR DISCLOSED IN WHOLE OR IN PART, OR USED AS THE BASIS FOR THE MANUFACTURE OR SALES OF APPARATUS WITHOUT THE EXPRESS WRITTEN CONSENT OF ITT ENGINEERED VALVES.



INLET, 1/4 NPT
 DRY, CLEAN REGULATED
 PNEUMATIC SUPPLY
 FILTERED TO 40 MICRONS
 OR LESS

EXHAUST
 WITH MUFFLER
 3/4 NPT

CYLINDER

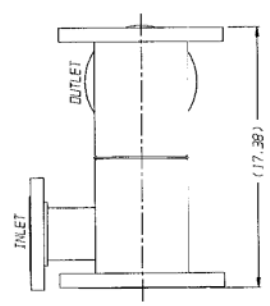
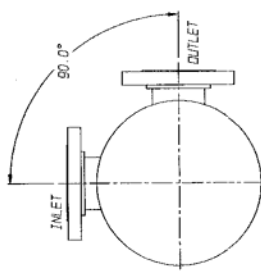
NOTES:

1. VALVE SHOWN WITH COIL "B" LAST ENERGIZED

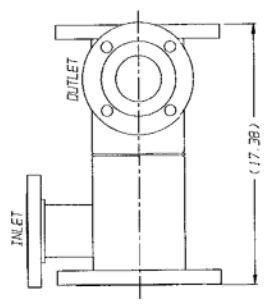
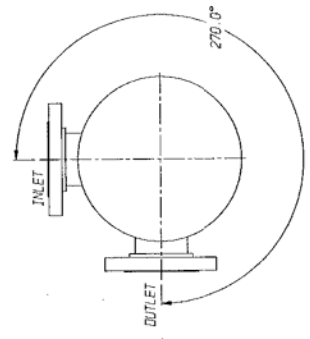
ECN#2515

PART NO. -
 PATTERN NO. -

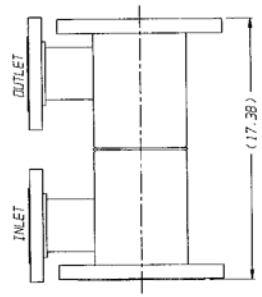
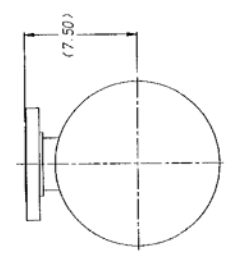
| | | | | |
|---|---------------------|------------------|-------------------------------|------------------|
| ITT Engineered Valves ITT Fluid Technology Corporation Lancaster, Pa SHEET 1 OF 1 | | SIZE A | DRAWING NUMBER 117474 | REV - |
| PNEUMATIC SUPPLY GAS BURNER VALVE T4200 - T4600 VERSA DUAL COIL | | SUPERSEDES:- | | |
| TOLERANCES EXCEPT AS NOTED DECIMALS .XX ± .02 .XXX ± .005 ANGLES ± .50° REMOVE ALL BURRS AND SHARP EDGES ALL MACHINED SURFACES TO BE 125 EXCEPT AS NOTED | WEIGHT - | SCALE NTS | DATE 10/28/97 BY JON | |
| | DWG CHKD APVD | DATE 10/21/97 | BY mjk | DATE 10/25/97 |



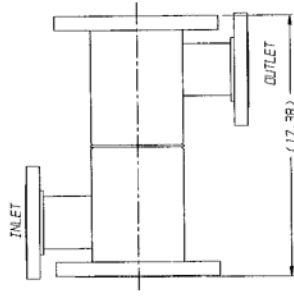
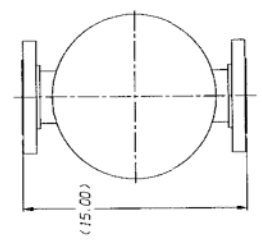
OUTLET AT 90 DEGREES FROM INLET
SCALE 1:4



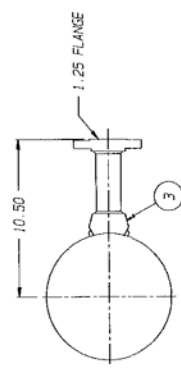
OUTLET AT 270 DEGREES FROM INLET
SCALE 1:4



OUTLET AT 0 DEGREES FROM INLET
SCALE 1:4

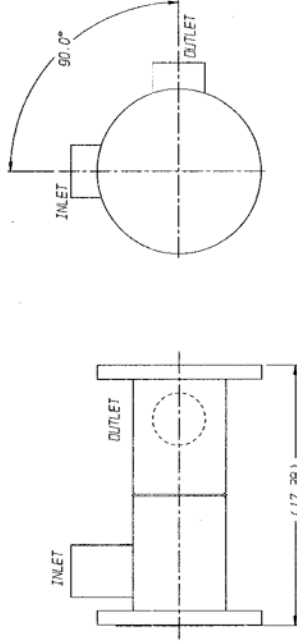


OUTLET AT 180 DEGREES FROM INLET
SCALE 1:4

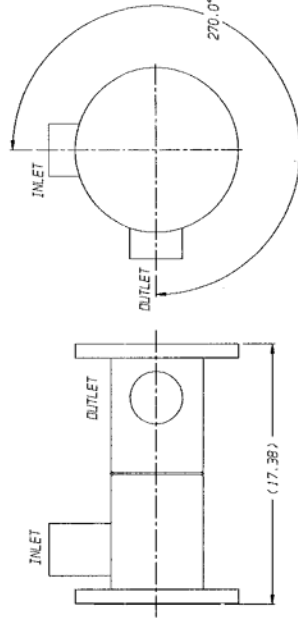


FLANGED VENT ASSEMBLY
ITEM 3
SCALE 1:4

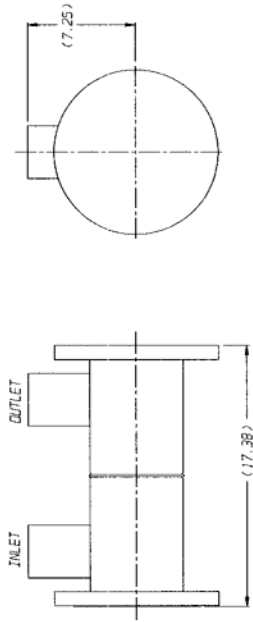
| | | |
|---|-----------------------------|--|
| <p>ECN# 6159</p> <p>THIS DOCUMENT IS THE SOLE PROPERTY OF ITT INDUSTRIES, INC., OR ITS SUBSIDIARY, AND IS PROVIDED SUBJECT TO RETURN. IT IS ISSUED IN STRICT CONFIDENCE AND SHALL NOT BE REPRODUCED, OR COPIED, OR DISCLOSED IN WHOLE OR IN PART, OR USED AS THE BASIS FOR THE MANUFACTURE OR SALES OF APPARATUS OR PARTS TO WHICH THE DOCUMENT RELATES, WITHOUT THE EXPRESS WRITTEN CONSENT OF ITT INDUSTRIES, INC. OR ITS SUBSIDIARY. THIS LEGEND SHALL BE MARKED ON ANY REPRODUCTION HEREOF, IN WHOLE OR IN PART. ALL RIGHTS TO THE INFORMATION AND DESIGN DISCLOSED HEREIN ARE RESERVED TO ITT INDUSTRIES, INC., OR ITS SUBSIDIARY.</p> | | <p>MAX. DIMENSIONAL TOLERANCES UNLESS OTHERWISE SPECIFIED:</p> <p>ALL DIMENSIONS ARE IN INCHES UNLESS OTHERWISE SPECIFIED.</p> |
| <p>FORM INLET PROJECTION</p> | <p>SCALE</p> <p>1:2</p> | <p>MAIN ASSEMBLY</p> <p>12530</p> |
| <p>DATE</p> <p>11/11/84</p> | <p>REV</p> <p>1</p> | <p>REV</p> <p>1</p> |
| <p>BY</p> <p>XXX</p> | <p>CHK</p> <p>XXX</p> | <p>CHK</p> <p>XXX</p> |
| <p>APP</p> <p>XXX</p> | <p>APP</p> <p>XXX</p> | <p>APP</p> <p>XXX</p> |
| <p>DATE</p> <p>11/11/84</p> | <p>DATE</p> <p>11/11/84</p> | <p>DATE</p> <p>11/11/84</p> |
| <p>BY</p> <p>XXX</p> | <p>BY</p> <p>XXX</p> | <p>BY</p> <p>XXX</p> |
| <p>APP</p> <p>XXX</p> | <p>APP</p> <p>XXX</p> | <p>APP</p> <p>XXX</p> |
| <p>DATE</p> <p>11/11/84</p> | <p>DATE</p> <p>11/11/84</p> | <p>DATE</p> <p>11/11/84</p> |
| <p>BY</p> <p>XXX</p> | <p>BY</p> <p>XXX</p> | <p>BY</p> <p>XXX</p> |
| <p>APP</p> <p>XXX</p> | <p>APP</p> <p>XXX</p> | <p>APP</p> <p>XXX</p> |
| <p>DATE</p> <p>11/11/84</p> | <p>DATE</p> <p>11/11/84</p> | <p>DATE</p> <p>11/11/84</p> |
| <p>BY</p> <p>XXX</p> | <p>BY</p> <p>XXX</p> | <p>BY</p> <p>XXX</p> |
| <p>APP</p> <p>XXX</p> | <p>APP</p> <p>XXX</p> | <p>APP</p> <p>XXX</p> |
| <p>DATE</p> <p>11/11/84</p> | <p>DATE</p> <p>11/11/84</p> | <p>DATE</p> <p>11/11/84</p> |
| <p>BY</p> <p>XXX</p> | <p>BY</p> <p>XXX</p> | <p>BY</p> <p>XXX</p> |
| <p>APP</p> <p>XXX</p> | <p>APP</p> <p>XXX</p> | <p>APP</p> <p>XXX</p> |
| <p>DATE</p> <p>11/11/84</p> | <p>DATE</p> <p>11/11/84</p> | <p>DATE</p> <p>11/11/84</p> |
| <p>BY</p> <p>XXX</p> | <p>BY</p> <p>XXX</p> | <p>BY</p> <p>XXX</p> |
| <p>APP</p> <p>XXX</p> | <p>APP</p> <p>XXX</p> | <p>APP</p> <p>XXX</p> |
| <p>DATE</p> <p>11/11/84</p> | <p>DATE</p> <p>11/11/84</p> | <p>DATE</p> <p>11/11/84</p> |
| <p>BY</p> <p>XXX</p> | <p>BY</p> <p>XXX</p> | <p>BY</p> <p>XXX</p> |
| <p>APP</p> <p>XXX</p> | <p>APP</p> <p>XXX</p> | <p>APP</p> <p>XXX</p> |
| <p>DATE</p> <p>11/11/84</p> | <p>DATE</p> <p>11/11/84</p> | <p>DATE</p> <p>11/11/84</p> |
| <p>BY</p> <p>XXX</p> | <p>BY</p> <p>XXX</p> | <p>BY</p> <p>XXX</p> |
| <p>APP</p> <p>XXX</p> | <p>APP</p> <p>XXX</p> | <p>APP</p> <p>XXX</p> |
| <p>DATE</p> <p>11/11/84</p> | <p>DATE</p> <p>11/11/84</p> | <p>DATE</p> <p>11/11/84</p> |
| <p>BY</p> <p>XXX</p> | <p>BY</p> <p>XXX</p> | <p>BY</p> <p>XXX</p> |
| <p>APP</p> <p>XXX</p> | <p>APP</p> <p>XXX</p> | <p>APP</p> <p>XXX</p> |
| <p>DATE</p> <p>11/11/84</p> | <p>DATE</p> <p>11/11/84</p> | <p>DATE</p> <p>11/11/84</p> |
| <p>BY</p> <p>XXX</p> | <p>BY</p> <p>XXX</p> | <p>BY</p> <p>XXX</p> |
| <p>APP</p> <p>XXX</p> | <p>APP</p> <p>XXX</p> | <p>APP</p> <p>XXX</p> |
| <p>DATE</p> <p>11/11/84</p> | <p>DATE</p> <p>11/11/84</p> | <p>DATE</p> <p>11/11/84</p> |
| <p>BY</p> <p>XXX</p> | <p>BY</p> <p>XXX</p> | <p>BY</p> <p>XXX</p> |
| <p>APP</p> <p>XXX</p> | <p>APP</p> <p>XXX</p> | <p>APP</p> <p>XXX</p> |
| <p>DATE</p> <p>11/11/84</p> | <p>DATE</p> <p>11/11/84</p> | <p>DATE</p> <p>11/11/84</p> |
| <p>BY</p> <p>XXX</p> | <p>BY</p> <p>XXX</p> | <p>BY</p> <p>XXX</p> |
| <p>APP</p> <p>XXX</p> | <p>APP</p> <p>XXX</p> | <p>APP</p> <p>XXX</p> |
| <p>DATE</p> <p>11/11/84</p> | <p>DATE</p> <p>11/11/84</p> | <p>DATE</p> <p>11/11/84</p> |
| <p>BY</p> <p>XXX</p> | <p>BY</p> <p>XXX</p> | <p>BY</p> <p>XXX</p> |
| <p>APP</p> <p>XXX</p> | <p>APP</p> <p>XXX</p> | <p>APP</p> <p>XXX</p> |
| <p>DATE</p> <p>11/11/84</p> | <p>DATE</p> <p>11/11/84</p> | <p>DATE</p> <p>11/11/84</p> |
| <p>BY</p> <p>XXX</p> | <p>BY</p> <p>XXX</p> | <p>BY</p> <p>XXX</p> |
| <p>APP</p> <p>XXX</p> | <p>APP</p> <p>XXX</p> | <p>APP</p> <p>XXX</p> |
| <p>DATE</p> <p>11/11/84</p> | <p>DATE</p> <p>11/11/84</p> | <p>DATE</p> <p>11/11/84</p> |
| <p>BY</p> <p>XXX</p> | <p>BY</p> <p>XXX</p> | <p>BY</p> <p>XXX</p> |
| <p>APP</p> <p>XXX</p> | <p>APP</p> <p>XXX</p> | <p>APP</p> <p>XXX</p> |
| <p>DATE</p> <p>11/11/84</p> | <p>DATE</p> <p>11/11/84</p> | <p>DATE</p> <p>11/11/84</p> |
| <p>BY</p> <p>XXX</p> | <p>BY</p> <p>XXX</p> | <p>BY</p> <p>XXX</p> |
| <p>APP</p> <p>XXX</p> | <p>APP</p> <p>XXX</p> | <p>APP</p> <p>XXX</p> |
| <p>DATE</p> <p>11/11/84</p> | <p>DATE</p> <p>11/11/84</p> | <p>DATE</p> <p>11/11/84</p> |
| <p>BY</p> <p>XXX</p> | <p>BY</p> <p>XXX</p> | <p>BY</p> <p>XXX</p> |
| <p>APP</p> <p>XXX</p> | <p>APP</p> <p>XXX</p> | <p>APP</p> <p>XXX</p> |
| <p>DATE</p> <p>11/11/84</p> | <p>DATE</p> <p>11/11/84</p> | <p>DATE</p> <p>11/11/84</p> |
| <p>BY</p> <p>XXX</p> | <p>BY</p> <p>XXX</p> | <p>BY</p> <p>XXX</p> |
| <p>APP</p> <p>XXX</p> | <p>APP</p> <p>XXX</p> | <p>APP</p> <p>XXX</p> |
| <p>DATE</p> <p>11/11/84</p> | <p>DATE</p> <p>11/11/84</p> | <p>DATE</p> <p>11/11/84</p> |
| <p>BY</p> <p>XXX</p> | <p>BY</p> <p>XXX</p> | <p>BY</p> <p>XXX</p> |
| <p>APP</p> <p>XXX</p> | <p>APP</p> <p>XXX</p> | <p>APP</p> <p>XXX</p> |
| <p>DATE</p> <p>11/11/84</p> | <p>DATE</p> <p>11/11/84</p> | <p>DATE</p> <p>11/11/84</p> |
| <p>BY</p> <p>XXX</p> | <p>BY</p> <p>XXX</p> | <p>BY</p> <p>XXX</p> |
| <p>APP</p> <p>XXX</p> | <p>APP</p> <p>XXX</p> | <p>APP</p> <p>XXX</p> |
| <p>DATE</p> <p>11/11/84</p> | <p>DATE</p> <p>11/11/84</p> | <p>DATE</p> <p>11/11/84</p> |
| <p>BY</p> <p>XXX</p> | <p>BY</p> <p>XXX</p> | <p>BY</p> <p>XXX</p> |
| <p>APP</p> <p>XXX</p> | <p>APP</p> <p>XXX</p> | <p>APP</p> <p>XXX</p> |
| <p>DATE</p> <p>11/11/84</p> | <p>DATE</p> <p>11/11/84</p> | <p>DATE</p> <p>11/11/84</p> |
| <p>BY</p> <p>XXX</p> | <p>BY</p> <p>XXX</p> | <p>BY</p> <p>XXX</p> |
| <p>APP</p> <p>XXX</p> | <p>APP</p> <p>XXX</p> | <p>APP</p> <p>XXX</p> |
| <p>DATE</p> <p>11/11/84</p> | <p>DATE</p> <p>11/11/84</p> | <p>DATE</p> <p>11/11/84</p> |
| <p>BY</p> <p>XXX</p> | <p>BY</p> <p>XXX</p> | <p>BY</p> <p>XXX</p> |
| <p>APP</p> <p>XXX</p> | <p>APP</p> <p>XXX</p> | <p>APP</p> <p>XXX</p> |
| <p>DATE</p> <p>11/11/84</p> | <p>DATE</p> <p>11/11/84</p> | <p>DATE</p> <p>11/11/84</p> |
| <p>BY</p> <p>XXX</p> | <p>BY</p> <p>XXX</p> | <p>BY</p> <p>XXX</p> |
| <p>APP</p> <p>XXX</p> | <p>APP</p> <p>XXX</p> | <p>APP</p> <p>XXX</p> |
| <p>DATE</p> <p>11/11/84</p> | <p>DATE</p> <p>11/11/84</p> | <p>DATE</p> <p>11/11/84</p> |
| <p>BY</p> <p>XXX</p> | <p>BY</p> <p>XXX</p> | <p>BY</p> <p>XXX</p> |
| <p>APP</p> <p>XXX</p> | <p>APP</p> <p>XXX</p> | <p>APP</p> <p>XXX</p> |
| <p>DATE</p> <p>11/11/84</p> | <p>DATE</p> <p>11/11/84</p> | <p>DATE</p> <p>11/11/84</p> |
| <p>BY</p> <p>XXX</p> | <p>BY</p> <p>XXX</p> | <p>BY</p> <p>XXX</p> |
| <p>APP</p> <p>XXX</p> | <p>APP</p> <p>XXX</p> | <p>APP</p> <p>XXX</p> |
| <p>DATE</p> <p>11/11/84</p> | <p>DATE</p> <p>11/11/84</p> | <p>DATE</p> <p>11/11/84</p> |
| <p>BY</p> <p>XXX</p> | <p>BY</p> <p>XXX</p> | <p>BY</p> <p>XXX</p> |
| <p>APP</p> <p>XXX</p> | <p>APP</p> <p>XXX</p> | <p>APP</p> <p>XXX</p> |
| <p>DATE</p> <p>11/11/84</p> | <p>DATE</p> <p>11/11/84</p> | <p>DATE</p> <p>11/11/84</p> |
| <p>BY</p> <p>XXX</p> | <p>BY</p> <p>XXX</p> | <p>BY</p> <p>XXX</p> |
| <p>APP</p> <p>XXX</p> | <p>APP</p> <p>XXX</p> | <p>APP</p> <p>XXX</p> |
| <p>DATE</p> <p>11/11/84</p> | <p>DATE</p> <p>11/11/84</p> | <p>DATE</p> <p>11/11/84</p> |
| <p>BY</p> <p>XXX</p> | <p>BY</p> <p>XXX</p> | <p>BY</p> <p>XXX</p> |
| <p>APP</p> <p>XXX</p> | <p>APP</p> <p>XXX</p> | <p>APP</p> <p>XXX</p> |
| <p>DATE</p> <p>11/11/84</p> | <p>DATE</p> <p>11/11/84</p> | <p>DATE</p> <p>11/11/84</p> |
| <p>BY</p> <p>XXX</p> | <p>BY</p> <p>XXX</p> | <p>BY</p> <p>XXX</p> |
| <p>APP</p> <p>XXX</p> | <p>APP</p> <p>XXX</p> | <p>APP</p> <p>XXX</p> |
| <p>DATE</p> <p>11/11/84</p> | <p>DATE</p> <p>11/11/84</p> | <p>DATE</p> <p>11/11/84</p> |
| <p>BY</p> <p>XXX</p> | <p>BY</p> <p>XXX</p> | <p>BY</p> <p>XXX</p> |
| <p>APP</p> <p>XXX</p> | <p>APP</p> <p>XXX</p> | <p>APP</p> <p>XXX</p> |
| <p>DATE</p> <p>11/11/84</p> | <p>DATE</p> <p>11/11/84</p> | <p>DATE</p> <p>11/11/84</p> |
| <p>BY</p> <p>XXX</p> | <p>BY</p> <p>XXX</p> | <p>BY</p> <p>XXX</p> |
| <p>APP</p> <p>XXX</p> | <p>APP</p> <p>XXX</p> | <p>APP</p> <p>XXX</p> |
| <p>DATE</p> <p>11/11/84</p> | <p>DATE</p> <p>11/11/84</p> | <p>DATE</p> <p>11/11/84</p> |
| <p>BY</p> <p>XXX</p> | <p>BY</p> <p>XXX</p> | <p>BY</p> <p>XXX</p> |
| <p>APP</p> <p>XXX</p> | <p>APP</p> <p>XXX</p> | <p>APP</p> <p>XXX</p> |
| <p>DATE</p> <p>11/11/84</p> | <p>DATE</p> <p>11/11/84</p> | <p>DATE</p> <p>11/11/84</p> |
| <p>BY</p> <p>XXX</p> | <p>BY</p> <p>XXX</p> | <p>BY</p> <p>XXX</p> |
| <p>APP</p> <p>XXX</p> | <p>APP</p> <p>XXX</p> | <p>APP</p> <p>XXX</p> |
| <p>DATE</p> <p>11/11/84</p> | <p>DATE</p> <p>11/11/84</p> | <p>DATE</p> <p>11/11/84</p> |
| <p>BY</p> <p>XXX</p> | <p>BY</p> <p>XXX</p> | <p>BY</p> <p>XXX</p> |
| <p>APP</p> <p>XXX</p> | <p>APP</p> <p>XXX</p> | <p>APP</p> <p>XXX</p> |
| <p>DATE</p> <p>11/11/84</p> | <p>DATE</p> <p>11/11/84</p> | <p>DATE</p> <p>11/11/84</p> |
| <p>BY</p> <p>XXX</p> | <p>BY</p> <p>XXX</p> | <p>BY</p> <p>XXX</p> |
| <p>APP</p> <p>XXX</p> | <p>APP</p> <p>XXX</p> | <p>APP</p> <p>XXX</p> |
| <p>DATE</p> <p>11/11/84</p> | <p>DATE</p> <p>11/11/84</p> | <p>DATE</p> <p>11/11/84</p> |
| <p>BY</p> <p>XXX</p> | <p>BY</p> <p>XXX</p> | <p>BY</p> <p>XXX</p> |
| <p>APP</p> <p>XXX</p> | <p>APP</p> <p>XXX</p> | <p>APP</p> <p>XXX</p> |
| <p>DATE</p> <p>11/11/84</p> | <p>DATE</p> <p>11/11/84</p> | <p>DATE</p> <p>11/11/84</p> |
| <p>BY</p> <p>XXX</p> | <p>BY</p> <p>XXX</p> | <p>BY</p> <p>XXX</p> |
| <p>APP</p> <p>XXX</p> | <p>APP</p> <p>XXX</p> | <p>APP</p> <p>XXX</p> |
| <p>DATE</p> <p>11/11/84</p> | <p>DATE</p> <p>11/11/84</p> | <p>DATE</p> <p>11/11/84</p> |
| <p>BY</p> <p>XXX</p> | <p>BY</p> <p>XXX</p> | <p>BY</p> <p>XXX</p> |
| <p>APP</p> <p>XXX</p> | <p>APP</p> <p>XXX</p> | <p>APP</p> <p>XXX</p> |
| <p>DATE</p> <p>11/11/84</p> | <p>DATE</p> <p>11/11/84</p> | <p>DATE</p> <p>11/11/84</p> |
| <p>BY</p> <p>XXX</p> | <p>BY</p> <p>XXX</p> | <p>BY</p> <p>XXX</p> |
| <p>APP</p> <p>XXX</p> | <p>APP</p> <p>XXX</p> | <p>APP</p> <p>XXX</p> |
| <p>DATE</p> <p>11/11/84</p> | <p>DATE</p> <p>11/11/84</p> | <p>DATE</p> <p>11/11/84</p> |
| <p>BY</p> <p>XXX</p> | <p>BY</p> <p>XXX</p> | <p>BY</p> <p>XXX</p> |
| <p>APP</p> <p>XXX</p> | <p>APP</p> <p>XXX</p> | <p>APP</p> <p>XXX</p> |
| <p>DATE</p> <p>11/11/84</p> | <p>DATE</p> <p>11/11/84</p> | <p>DATE</p> <p>11/11/84</p> |
| <p>BY</p> <p>XXX</p> | <p>BY</p> <p>XXX</p> | <p>BY</p> <p>XXX</p> |
| <p>APP</p> <p>XXX</p> | <p>APP</p> <p>XXX</p> | <p>APP</p> <p>XXX</p> |
| <p>DATE</p> <p>11/11/84</p> | <p>DATE</p> <p>11/11/84</p> | <p>DATE</p> <p>11/11/84</p> |
| <p>BY</p> <p>XXX</p> | <p>BY</p> <p>XXX</p> | <p>BY</p> <p>XXX</p> |
| <p>APP</p> <p>XXX</p> | <p>APP</p> <p>XXX</p> | <p>APP</p> <p>XXX</p> |
| <p>DATE</p> <p>11/11/84</p> | <p>DATE</p> <p>11/11/84</p> | <p>DATE</p> <p>11/11/84</p> |
| <p>BY</p> <p>XXX</p> | <p>BY</p> <p>XXX</p> | <p>BY</p> <p>XXX</p> |
| <p>APP</p> <p>XXX</p> | <p>APP</p> <p>XXX</p> | <p>APP</p> <p>XXX</p> |
| <p>DATE</p> <p>11/11/84</p> | <p>DATE</p> <p>11/11/84</p> | <p>DATE</p> <p>11/11/84</p> |
| <p>BY</p> <p>XXX</p> | <p>BY</p> <p>XXX</p> | <p>BY</p> <p>XXX</p> |
| <p>APP</p> <p>XXX</p> | <p>APP</p> <p>XXX</p> | <p>APP</p> <p>XXX</p> |
| <p>DATE</p> <p>11/11/84</p> | <p>DATE</p> <p>11/11/84</p> | <p>DATE</p> <p>11/11/84</p> |
| <p>BY</p> <p>XXX</p> | <p>BY</p> <p>XXX</p> | <p>BY</p> <p>XXX</p> |
| <p>APP</p> <p>XXX</p> | <p>APP</p> <p>XXX</p> | <p>APP</p> <p>XXX</p> |
| <p>DATE</p> <p>11/11/84</p> | <p>DATE</p> <p>11/11/84</p> | <p>DATE</p> <p>11/11/84</p> |
| <p>BY</p> <p>XXX</p> | <p>BY</p> <p>XXX</p> | <p>BY</p> <p>XXX</p> |
| <p>APP</p> <p>XXX</p> | <p>APP</p> <p>XXX</p> | <p>APP</p> <p>XXX</p> |
| <p>DATE</p> <p>11/11/84</p> | <p>DATE</p> <p>11/11/84</p> | <p>DATE</p> <p>11/11/84</p> |
| | | |



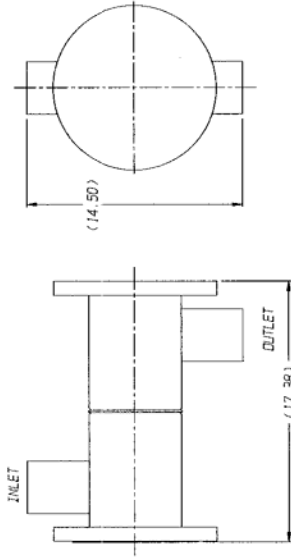
OUTLET AT 90 DEGREES FROM INLET
SCALE 1:4



OUTLET AT 270 DEGREES FROM INLET
SCALE 1:4



OUTLET AT 0 DEGREES FROM INLET
SCALE 1:4



OUTLET AT 180 DEGREES FROM INLET
SCALE 1:4

ECN# 6159

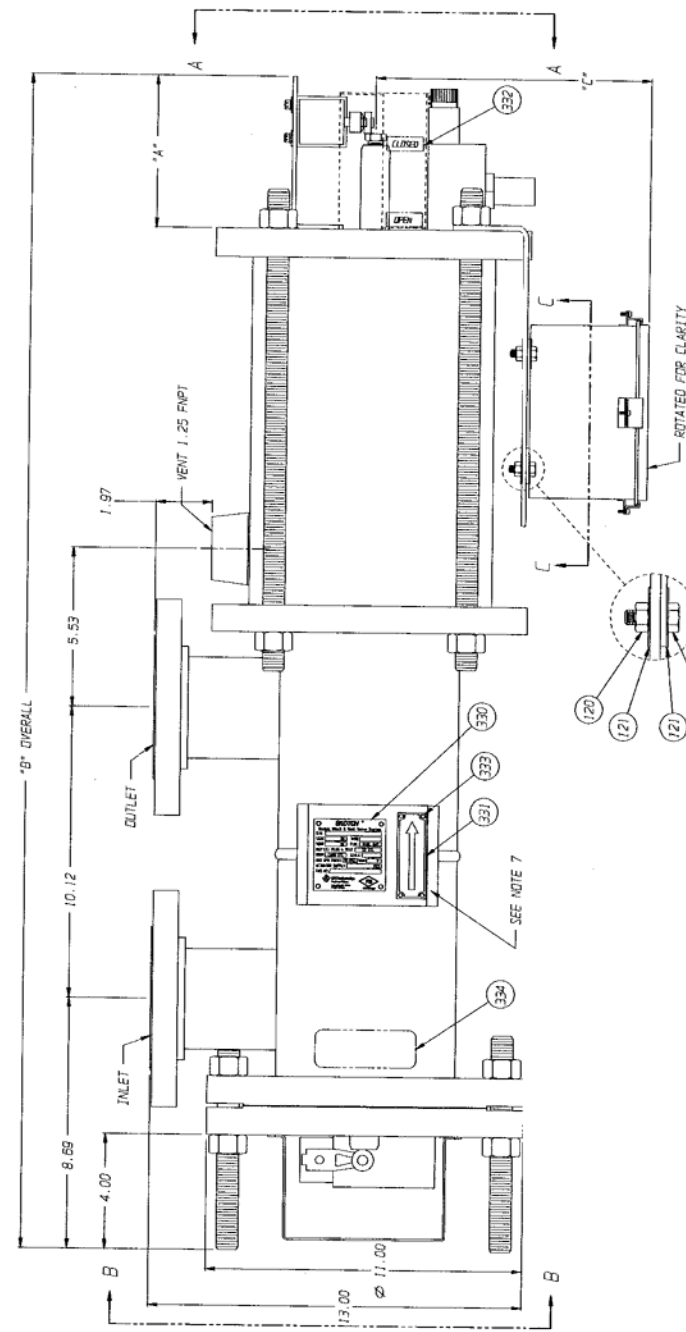
THIS DOCUMENT IS THE SOLE PROPERTY OF ITT INDUSTRIES, INC., OR ITS SUBSIDIARY, AND IS PROVIDED SUBJECT TO RETURN. IT IS ISSUED IN STRICT CONFIDENCE AND SHALL NOT BE REPRODUCED, OR COPIED, OR DISCLOSED IN WHOLE OR IN PART, OR USED AS THE BASIS FOR THE MANUFACTURE OR SALES OF APPARATUS OR PARTS TO WHICH THE DOCUMENT RELATES, WITHOUT THE EXPRESS WRITTEN CONSENT OF ITT INDUSTRIES, INC., OR ITS SUBSIDIARY. THIS LEGEND SHALL BE MARKED ON ANY REPRODUCTION HEREOF, IN WHOLE OR IN PART. ALL RIGHTS TO THE INFORMATION AND DESIGN DISCLOSED HEREIN ARE RESERVED TO ITT INDUSTRIES, INC., OR ITS SUBSIDIARY.

| | | | |
|------------------------------|--|------------------------------|--|
| THIRD ANGLE PROJECTION | | FIRST ANGLE PROJECTION | |
| | | | |
| THREE DEGREE ANGLES | | THREE DEGREE ANGLES | |
| ALL DIMENSIONS ARE IN INCHES | | ALL DIMENSIONS ARE IN INCHES | |

| | | | |
|--------------------|--|---------------|--|
| PATTERN NO. - | | MAIN ASSEMBLY | |
| ITT Industries | | 2.00 | |
| Engineered Value | | 2.00 | |
| Lancaster, PA, USA | | 2.00 | |
| REV | | 2.00 | |
| SHEET | | 2.00 | |
| 4 OF 4 | | 2.00 | |
| REV | | 2.00 | |
| C | | 2.00 | |

FILE COPY

| ITEM | QTY | DESCRIPTION |
|------|-----|---------------------------------|
| 101 | 1 | COVER - BULLET VALVE P.C. |
| 102 | 2 | CAPSCR BUSHING 10-32X0.25 |
| 107 | 1 | COVER - INLET VALVE P.C. |
| 108 | 2 | CAPSCR BUSHING 10-32X0.25 |
| 118 | 1 | J-BOX 5.00 X 6.00 |
| 119 | 4 | CAPSCR HEX. 5.00 X 0.75 |
| 120 | 4 | NUT HEX. 0.25-20 X 0.75 |
| 121 | 8 | LKNSHR EXT. 100TCH 0.25 |
| 122 | 8 | J-BOX SUB-PLATE |
| 201 | 1 | SWITCH LEVER |
| 202 | 1 | BRACKET SW P.C. BULLET NEMA 4 |
| 203 | 2 | BRACKET SW P.C. BULLET NEMA 7 |
| 204 | 2 | CAPSCR HEASKT 10-32X0.50 NEMA 4 |
| 205 | 2 | WASHER PL. 10 |
| 206 | 2 | LKNSHR SPR 10 |
| 207 | 2 | CAPSCR HEASKT 10-32X0.50 |
| 208 | 2 | LKNSHR SPR 10 |
| 209 | 2 | CONDUIT FITTING L101GT 5.90 DEG |
| 210 | 2 | CONDUIT FITTING L101GT 5.45 DEG |
| 211 | 2 | CONDUIT FITTING L101GT 5.45 DEG |
| 212 | 2 | CONDUIT SEAL FIG. 5 |
| 213 | 2 | CONDUIT SEAL FIG. 5 |
| 214 | 2 | CONDUIT SEAL FIG. 5 |
| 215 | 2 | CONDUIT SEAL FIG. 5 |
| 216 | 2 | CONDUIT SEAL FIG. 5 |
| 217 | 2 | CONDUIT SEAL FIG. 5 |
| 218 | 2 | CAPSCR HEASKT 10-32X1.75 |
| 219 | 2 | LKNSHR SPR 10 HI-COLLAR |
| 220 | 2 | CONDUIT FITTING L101GT 5.45 DEG |
| 221 | 2 | CONDUIT FITTING L101GT 5.45 DEG |
| 222 | 2 | CONDUIT FITTING L101GT 5.45 DEG |
| 223 | 2 | CONDUIT FITTING L101GT 5.45 DEG |
| 224 | 2 | CONDUIT FITTING L101GT 5.45 DEG |
| 225 | 2 | CONDUIT FITTING L101GT 5.45 DEG |
| 226 | 2 | CONDUIT FITTING L101GT 5.45 DEG |
| 227 | 2 | CONDUIT FITTING L101GT 5.45 DEG |
| 228 | 2 | CONDUIT FITTING L101GT 5.45 DEG |
| 229 | 2 | CONDUIT FITTING L101GT 5.45 DEG |
| 230 | 2 | CONDUIT FITTING L101GT 5.45 DEG |
| 231 | 2 | CONDUIT FITTING L101GT 5.45 DEG |
| 232 | 2 | CONDUIT FITTING L101GT 5.45 DEG |
| 233 | 2 | CONDUIT FITTING L101GT 5.45 DEG |
| 234 | 2 | CONDUIT FITTING L101GT 5.45 DEG |
| 235 | 2 | CONDUIT FITTING L101GT 5.45 DEG |
| 236 | 2 | CONDUIT FITTING L101GT 5.45 DEG |
| 237 | 2 | CONDUIT FITTING L101GT 5.45 DEG |
| 238 | 2 | CONDUIT FITTING L101GT 5.45 DEG |
| 239 | 2 | CONDUIT FITTING L101GT 5.45 DEG |
| 240 | 2 | CONDUIT FITTING L101GT 5.45 DEG |
| 241 | 2 | CONDUIT FITTING L101GT 5.45 DEG |
| 242 | 2 | CONDUIT FITTING L101GT 5.45 DEG |
| 243 | 2 | CONDUIT FITTING L101GT 5.45 DEG |
| 244 | 2 | CONDUIT FITTING L101GT 5.45 DEG |
| 245 | 2 | CONDUIT FITTING L101GT 5.45 DEG |
| 246 | 2 | CONDUIT FITTING L101GT 5.45 DEG |
| 247 | 2 | CONDUIT FITTING L101GT 5.45 DEG |
| 248 | 2 | CONDUIT FITTING L101GT 5.45 DEG |
| 249 | 2 | CONDUIT FITTING L101GT 5.45 DEG |
| 250 | 2 | CONDUIT FITTING L101GT 5.45 DEG |
| 251 | 2 | CONDUIT FITTING L101GT 5.45 DEG |
| 252 | 2 | CONDUIT FITTING L101GT 5.45 DEG |
| 253 | 2 | CONDUIT FITTING L101GT 5.45 DEG |
| 254 | 2 | CONDUIT FITTING L101GT 5.45 DEG |
| 255 | 2 | CONDUIT FITTING L101GT 5.45 DEG |
| 256 | 2 | CONDUIT FITTING L101GT 5.45 DEG |
| 257 | 2 | CONDUIT FITTING L101GT 5.45 DEG |
| 258 | 2 | CONDUIT FITTING L101GT 5.45 DEG |
| 259 | 2 | CONDUIT FITTING L101GT 5.45 DEG |
| 260 | 2 | CONDUIT FITTING L101GT 5.45 DEG |
| 261 | 2 | CONDUIT FITTING L101GT 5.45 DEG |
| 262 | 2 | CONDUIT FITTING L101GT 5.45 DEG |
| 263 | 2 | CONDUIT FITTING L101GT 5.45 DEG |
| 264 | 2 | CONDUIT FITTING L101GT 5.45 DEG |
| 265 | 2 | CONDUIT FITTING L101GT 5.45 DEG |
| 266 | 2 | CONDUIT FITTING L101GT 5.45 DEG |
| 267 | 2 | CONDUIT FITTING L101GT 5.45 DEG |
| 268 | 2 | CONDUIT FITTING L101GT 5.45 DEG |
| 269 | 2 | CONDUIT FITTING L101GT 5.45 DEG |



| ITEM | QTY | DESCRIPTION |
|------|-----|-------------------------|
| 330 | 1 | KEY BUSHING 0.75 X 0.50 |
| 331 | 1 | LAG PIN |
| 332 | 1 | LAG PIN |
| 333 | 1 | LAG PIN |
| 334 | 1 | LAG PIN |
| 335 | 1 | LAG PIN |
| 336 | 1 | LAG PIN |
| 337 | 1 | LAG PIN |
| 338 | 1 | LAG PIN |
| 339 | 1 | LAG PIN |
| 340 | 1 | LAG PIN |
| 341 | 1 | LAG PIN |
| 342 | 1 | LAG PIN |
| 343 | 1 | LAG PIN |
| 344 | 1 | LAG PIN |
| 345 | 1 | LAG PIN |
| 346 | 1 | LAG PIN |
| 347 | 1 | LAG PIN |
| 348 | 1 | LAG PIN |
| 349 | 1 | LAG PIN |
| 350 | 1 | LAG PIN |
| 351 | 1 | LAG PIN |
| 352 | 1 | LAG PIN |
| 353 | 1 | LAG PIN |
| 354 | 1 | LAG PIN |
| 355 | 1 | LAG PIN |
| 356 | 1 | LAG PIN |
| 357 | 1 | LAG PIN |
| 358 | 1 | LAG PIN |
| 359 | 1 | LAG PIN |
| 360 | 1 | LAG PIN |
| 361 | 1 | LAG PIN |
| 362 | 1 | LAG PIN |
| 363 | 1 | LAG PIN |
| 364 | 1 | LAG PIN |
| 365 | 1 | LAG PIN |
| 366 | 1 | LAG PIN |
| 367 | 1 | LAG PIN |
| 368 | 1 | LAG PIN |
| 369 | 1 | LAG PIN |
| 370 | 1 | LAG PIN |
| 371 | 1 | LAG PIN |
| 372 | 1 | LAG PIN |
| 373 | 1 | LAG PIN |
| 374 | 1 | LAG PIN |
| 375 | 1 | LAG PIN |
| 376 | 1 | LAG PIN |
| 377 | 1 | LAG PIN |
| 378 | 1 | LAG PIN |
| 379 | 1 | LAG PIN |
| 380 | 1 | LAG PIN |
| 381 | 1 | LAG PIN |
| 382 | 1 | LAG PIN |
| 383 | 1 | LAG PIN |
| 384 | 1 | LAG PIN |
| 385 | 1 | LAG PIN |
| 386 | 1 | LAG PIN |
| 387 | 1 | LAG PIN |
| 388 | 1 | LAG PIN |
| 389 | 1 | LAG PIN |
| 390 | 1 | LAG PIN |
| 391 | 1 | LAG PIN |
| 392 | 1 | LAG PIN |
| 393 | 1 | LAG PIN |
| 394 | 1 | LAG PIN |
| 395 | 1 | LAG PIN |
| 396 | 1 | LAG PIN |
| 397 | 1 | LAG PIN |
| 398 | 1 | LAG PIN |
| 399 | 1 | LAG PIN |
| 400 | 1 | LAG PIN |

| ITEM | QTY | DESCRIPTION |
|------|-----|---------------------------------|
| 119 | 4 | NUT HEX. 0.25-20 X 0.75 |
| 120 | 4 | CAPSCR HEX. 5.00 X 0.75 |
| 121 | 8 | J-BOX SUB-PLATE |
| 122 | 8 | LKNSHR EXT. 100TCH 0.25 |
| 201 | 1 | SWITCH LEVER |
| 202 | 1 | BRACKET SW P.C. BULLET NEMA 4 |
| 203 | 2 | BRACKET SW P.C. BULLET NEMA 7 |
| 204 | 2 | CAPSCR HEASKT 10-32X0.50 NEMA 4 |
| 205 | 2 | WASHER PL. 10 |
| 206 | 2 | LKNSHR SPR 10 |
| 207 | 2 | CAPSCR HEASKT 10-32X0.50 |
| 208 | 2 | LKNSHR SPR 10 |
| 209 | 2 | CONDUIT FITTING L101GT 5.90 DEG |
| 210 | 2 | CONDUIT FITTING L101GT 5.45 DEG |
| 211 | 2 | CONDUIT FITTING L101GT 5.45 DEG |
| 212 | 2 | CONDUIT SEAL FIG. 5 |
| 213 | 2 | CONDUIT SEAL FIG. 5 |
| 214 | 2 | CONDUIT SEAL FIG. 5 |
| 215 | 2 | CONDUIT SEAL FIG. 5 |
| 216 | 2 | CONDUIT SEAL FIG. 5 |
| 217 | 2 | CONDUIT SEAL FIG. 5 |
| 218 | 2 | CAPSCR HEASKT 10-32X1.75 |
| 219 | 2 | LKNSHR SPR 10 HI-COLLAR |
| 220 | 2 | CONDUIT FITTING L101GT 5.45 DEG |
| 221 | 2 | CONDUIT FITTING L101GT 5.45 DEG |
| 222 | 2 | CONDUIT FITTING L101GT 5.45 DEG |
| 223 | 2 | CONDUIT FITTING L101GT 5.45 DEG |
| 224 | 2 | CONDUIT FITTING L101GT 5.45 DEG |
| 225 | 2 | CONDUIT FITTING L101GT 5.45 DEG |
| 226 | 2 | CONDUIT FITTING L101GT 5.45 DEG |
| 227 | 2 | CONDUIT FITTING L101GT 5.45 DEG |
| 228 | 2 | CONDUIT FITTING L101GT 5.45 DEG |
| 229 | 2 | CONDUIT FITTING L101GT 5.45 DEG |
| 230 | 2 | CONDUIT FITTING L101GT 5.45 DEG |
| 231 | 2 | CONDUIT FITTING L101GT 5.45 DEG |
| 232 | 2 | CONDUIT FITTING L101GT 5.45 DEG |
| 233 | 2 | CONDUIT FITTING L101GT 5.45 DEG |
| 234 | 2 | CONDUIT FITTING L101GT 5.45 DEG |
| 235 | 2 | CONDUIT FITTING L101GT 5.45 DEG |
| 236 | 2 | CONDUIT FITTING L101GT 5.45 DEG |
| 237 | 2 | CONDUIT FITTING L101GT 5.45 DEG |
| 238 | 2 | CONDUIT FITTING L101GT 5.45 DEG |
| 239 | 2 | CONDUIT FITTING L101GT 5.45 DEG |
| 240 | 2 | CONDUIT FITTING L101GT 5.45 DEG |
| 241 | 2 | CONDUIT FITTING L101GT 5.45 DEG |
| 242 | 2 | CONDUIT FITTING L101GT 5.45 DEG |
| 243 | 2 | CONDUIT FITTING L101GT 5.45 DEG |
| 244 | 2 | CONDUIT FITTING L101GT 5.45 DEG |
| 245 | 2 | CONDUIT FITTING L101GT 5.45 DEG |
| 246 | 2 | CONDUIT FITTING L101GT 5.45 DEG |
| 247 | 2 | CONDUIT FITTING L101GT 5.45 DEG |
| 248 | 2 | CONDUIT FITTING L101GT 5.45 DEG |
| 249 | 2 | CONDUIT FITTING L101GT 5.45 DEG |
| 250 | 2 | CONDUIT FITTING L101GT 5.45 DEG |
| 251 | 2 | CONDUIT FITTING L101GT 5.45 DEG |
| 252 | 2 | CONDUIT FITTING L101GT 5.45 DEG |
| 253 | 2 | CONDUIT FITTING L101GT 5.45 DEG |
| 254 | 2 | CONDUIT FITTING L101GT 5.45 DEG |
| 255 | 2 | CONDUIT FITTING L101GT 5.45 DEG |
| 256 | 2 | CONDUIT FITTING L101GT 5.45 DEG |
| 257 | 2 | CONDUIT FITTING L101GT 5.45 DEG |
| 258 | 2 | CONDUIT FITTING L101GT 5.45 DEG |
| 259 | 2 | CONDUIT FITTING L101GT 5.45 DEG |
| 260 | 2 | CONDUIT FITTING L101GT 5.45 DEG |
| 261 | 2 | CONDUIT FITTING L101GT 5.45 DEG |
| 262 | 2 | CONDUIT FITTING L101GT 5.45 DEG |
| 263 | 2 | CONDUIT FITTING L101GT 5.45 DEG |
| 264 | 2 | CONDUIT FITTING L101GT 5.45 DEG |
| 265 | 2 | CONDUIT FITTING L101GT 5.45 DEG |
| 266 | 2 | CONDUIT FITTING L101GT 5.45 DEG |
| 267 | 2 | CONDUIT FITTING L101GT 5.45 DEG |
| 268 | 2 | CONDUIT FITTING L101GT 5.45 DEG |
| 269 | 2 | CONDUIT FITTING L101GT 5.45 DEG |
| 270 | 2 | CONDUIT FITTING L101GT 5.45 DEG |
| 271 | 2 | CONDUIT FITTING L101GT 5.45 DEG |
| 272 | 2 | CONDUIT FITTING L101GT 5.45 DEG |
| 273 | 2 | CONDUIT FITTING L101GT 5.45 DEG |
| 274 | 2 | CONDUIT FITTING L101GT 5.45 DEG |
| 275 | 2 | CONDUIT FITTING L101GT 5.45 DEG |
| 276 | 2 | CONDUIT FITTING L101GT 5.45 DEG |
| 277 | 2 | CONDUIT FITTING L101GT 5.45 DEG |
| 278 | 2 | CONDUIT FITTING L101GT 5.45 DEG |
| 279 | 2 | CONDUIT FITTING L101GT 5.45 DEG |
| 280 | 2 | CONDUIT FITTING L101GT 5.45 DEG |
| 281 | 2 | CONDUIT FITTING L101GT 5.45 DEG |
| 282 | 2 | CONDUIT FITTING L101GT 5.45 DEG |
| 283 | 2 | CONDUIT FITTING L101GT 5.45 DEG |
| 284 | 2 | CONDUIT FITTING L101GT 5.45 DEG |
| 285 | 2 | CONDUIT FITTING L101GT 5.45 DEG |
| 286 | 2 | CONDUIT FITTING L101GT 5.45 DEG |
| 287 | 2 | CONDUIT FITTING L101GT 5.45 DEG |
| 288 | 2 | CONDUIT FITTING L101GT 5.45 DEG |
| 289 | 2 | CONDUIT FITTING L101GT 5.45 DEG |
| 290 | 2 | CONDUIT FITTING L101GT 5.45 DEG |
| 291 | 2 | CONDUIT FITTING L101GT 5.45 DEG |
| 292 | 2 | CONDUIT FITTING L101GT 5.45 DEG |
| 293 | 2 | CONDUIT FITTING L101GT 5.45 DEG |
| 294 | 2 | CONDUIT FITTING L101GT 5.45 DEG |
| 295 | 2 | CONDUIT FITTING L101GT 5.45 DEG |
| 296 | 2 | CONDUIT FITTING L101GT 5.45 DEG |
| 297 | 2 | CONDUIT FITTING L101GT 5.45 DEG |
| 298 | 2 | CONDUIT FITTING L101GT 5.45 DEG |
| 299 | 2 | CONDUIT FITTING L101GT 5.45 DEG |
| 300 | 2 | CONDUIT FITTING L101GT 5.45 DEG |

- NOTES:
- CONDUIT NOT SHOWN FOR CLARITY
 - LAG PIN ITEM 341 TO BE ROTATED AROUND CONDUIT
 - ALL DIMENSIONS ARE FOR REFERENCE ONLY
 - RECOMMENDED SPARE PARTS ARE MARKED WITH AN ASTERISK (*) ON THE LIST OF PARTS
 - FITTINGS MAY BE ROTATED FOR EASE OF ASSEMBLY
 - CLEARANCE REQUIRED FOR IN-LINE DISASSEMBLY: 11.00 DIA X 13.00 ABOVE TEST PORT PLUG 11.00 DIA X 14.00 BELOW BOTTOM FLANGE STUDS
 - VALVE TAGS TYPICALLY LOCATED SAME SIDE AS JUNCTION BOX
 - ITEMS 214, 274 & 305 TO BE USED WITH STAINLESS STEEL SWITCHES

ECN# 6135

THIS DOCUMENT IS THE SOLE PROPERTY OF ITT INDUSTRIES, INC. OR ITS SUBSIDIARY AND IS PROVIDED SUBJECT TO RETURN. IT IS ISSUED IN STRICT CONFIDENCE AND SHALL NOT BE REPRODUCED, COPIED, OR USED IN WHOLE OR IN PART, OR USED AS THE BASIS FOR THE MANUFACTURE OF SALES OF APPARATUS OR PARTS TO WHICH THE DISCLOSED INFORMATION BE EXPRESS WRITTEN CONSENT OF ITT INDUSTRIES, INC. OR ITS SUBSIDIARY. THIS LEGEND SHALL BE MARKED ON ANY REPRODUCTION HEREIN IN WHOLE OR IN PART. ALL RIGHTS TO THE INFORMATION AND DESIGN DISCLOSED HEREIN ARE RESERVED TO ITT INDUSTRIES, INC., OR ITS SUBSIDIARY.

ITT Industries
 Englewood Clack
 Lancaster, PA USA

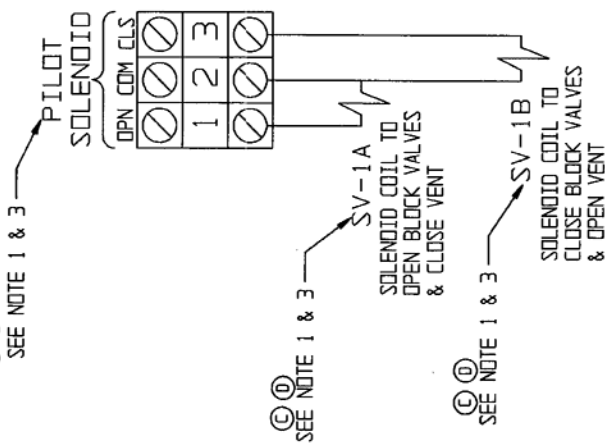
117849

117849

117849

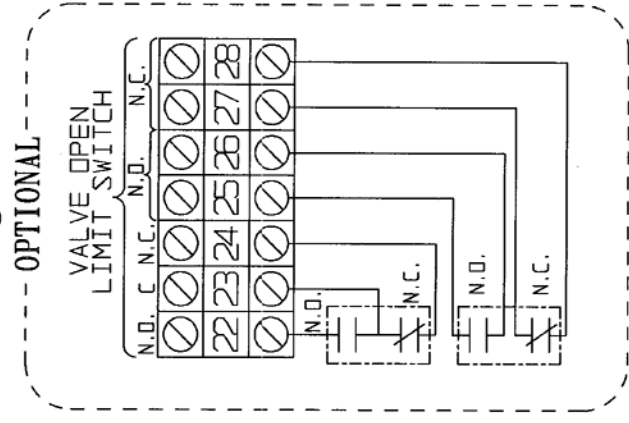
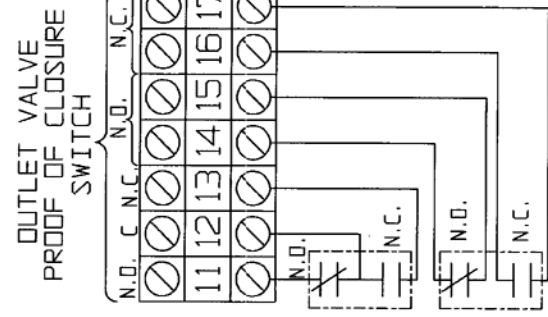
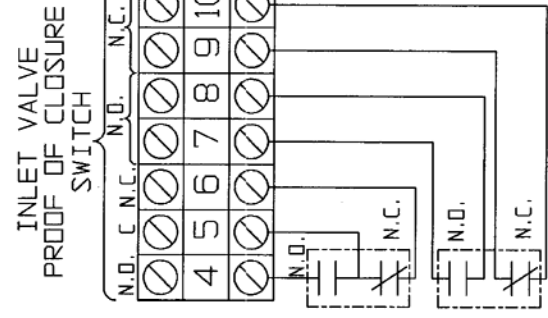
FILE COPY

① SEE NOTE 1 & 3



① SEE NOTE 1 & 3

① SEE NOTE 1 & 3



① SEE NOTE 6

SWITCH LOGIC

| SWITCH TYPE | INLET VALVE P.O.C. SWITCH | OUTLET VALVE P.O.C. SWITCH | VALVE OPEN LIMIT SWITCH |
|---------------------|---------------------------|----------------------------|-------------------------|
| TERMINALS | 4-5 | 11-12 | 23-24 |
| BLOCK VALVES CLOSED | + | + | + |
| VENT OPEN | + | + | + |
| BLOCK VALVES OPEN | + | + | + |
| VENT CLOSED | + | + | + |

* THESE TERMINALS ONLY PROVIDED ON ORDERS SUPPLIED WITH UPUI SWITCH CONTACT CONFIGURATION.

THIS IS A FACTORY MUTUAL CONTROLLED DOCUMENT. CHANGES MUST BE APPROVED BY FM PRIOR TO IMPLEMENTING.

①

- NOTES:
- SOLENOID VOLTAGE IS AC. CONSULT ORDER SPECIFICATION OR SOLENOID NAMEPLATE FOR SOLENOID VOLTAGE RATING.
 - ALL SWITCHES SHOWN WITH BLOCK VALVES IN CLOSED POSITION & VENT OPEN.
 - SV-1A & SV-2A REPRESENT THE MAGNETIC COILS ON THE SOLENOID. FOR FAIL CLOSED VALVES (MODEL 4X06), ONLY SV-1A IS SUPPLIED. THIS IS A MAINTAINED CONTACT SOLENOID. WHEN ENERGIZED THE VALVE OPENS. FAIL-IN-LAST VALVES (MODEL 4X05), SV-2A IS USED IN ADDITION TO SV-1A. THESE REQUIRE MOMENTARY CONTACTS IN THIS APPLICATION. BOTH COILS CANNOT BE ENERGIZED SIMULTANEOUSLY OR DAMAGE WILL OCCUR. "X" IN MODEL NUMBER DENOTES VALVE LINE SIZE. 7,8,9,10,14,15,16,17,25,26,27 AND 28. SEE ORDER SPECIFICATION FOR TYPE AND RATING.
 - WIRING SHOWN FOR DPDT SWITCHES. FOR SPOT DELETE WIRE NUMBERS FOR TYPE AND RATING.
 - APPLICABILITY - ALL T4000 SYSTEMS WITH AC SOLENOIDS.
 - NOT NORMALLY SUPPLIED.

ECN#-

PART NO. -

PATTERN NO. -

THIS DOCUMENT IS THE PROPERTY OF ITT ENGINEERED VALVES AND IS LOANED SUBJECT TO RETURN. IT IS ISSUED IN STRICT CONFIDENCE AND SHALL NOT BE REPRODUCED, OR COPIED OR DISCLOSED IN WHOLE OR IN PART, OR USED AS THE BASIS FOR THE MANUFACTURE OR SALES OF APPARATUS WITHOUT THE EXPRESS WRITTEN CONSENT OF ITT ENGINEERED VALVES.

WIRING DIAGRAM
GAS BURNER VALVE
PNEUMATIC - AC SOLENOIDS

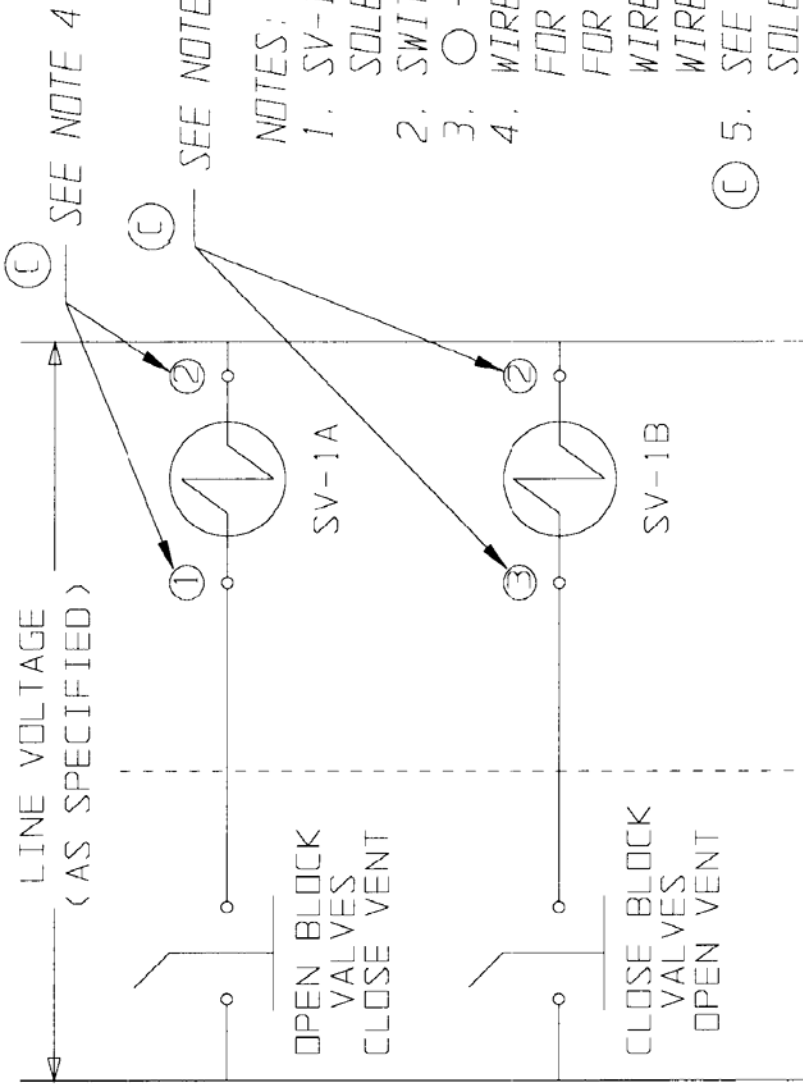
ITT Engineered Valves
ITT Fluid Technology Corporation
Lancaster, Pa.

SIZE DRAWING NUMBER
C 60-018

REV SHEET OF REV

FILE COPY

THIS DOCUMENT IS THE PROPERTY OF ITT ENGINEERED VALVES AND IS LOANED SUBJECT TO RETURN. IT IS ISSUED IN STRICT CONFIDENCE AND SHALL NOT BE REPRODUCED, OR COPIED, OR DISCLOSED IN WHOLE OR IN PART, OR USED AS THE BASIS FOR THE MANUFACTURE OR SALES OF APPARATUS WITHOUT THE EXPRESS WRITTEN CONSENT OF ITT ENGINEERED VALVES.



FILE COPY

NOTES:

1. SV-1A AND SV-1B FORM A DUAL COIL SOLENOID VALVE CONTROLLING GAS FLOW. SWITCHES ARE MOMENTARY CONTACT TYPE.
3. ○ - REPRESENTS A WIRE #.
4. WIRE #'S SHOWN ARE FOR AC SOLENOIDS. FOR DC VOLTAGE, SUBSTITUTE WIRE #18 FOR #1, WIRE #19 FOR SV-1A COIL WIRE #2, WIRE #20 FOR #3, AND WIRE #21 FOR SV-1B COIL WIRE #2.
5. SEE ORDER SPECIFICATION FOR SOLENOID VOLTAGE RATING.
6. APPLICATION - ALL 14X05 SYSTEMS ("X" DENOTES LINE SIZE).

WR# -

SUPPLIED BY CUSTOMER

PART NO. -

PATTERN NO. -

| REV | DATE | ECN NBR | BY | CHKD | APVD | TOLERANCES EXCEPT AS NOTED DECIMALS .XX ± .02 .XXX ± .005 ANGLES ±0°-30' REMOVE ALL BURRS AND SHARP EDGES ALL MACHINED SURFACES TO BE 125/EXCEPT AS NOTED | WEIGHT | SCALE | DATE | BY | WGT | SCALE | ELECTRICAL SCHEMATIC GAS BURNER VALVE PNEUMATIC - FAIL IN LAST |
|-----|----------|---------|-----|------|------|---|--------|-------|------|-----|-----|-------|--|
| C | 10/24/89 | 1035 | JRB | CHKD | APVD | | | | 1/89 | GCS | | | ELECTRICAL SCHEMATIC GAS BURNER VALVE PNEUMATIC - FAIL IN LAST |
| B | 10/90 | | JRB | | | | | | 1/89 | JRB | | | |
| A | 1/89 | | JRB | | | | | | | | | | |
| REV | DATE | ECN NBR | BY | CHKD | APVD | | | | | | | | |

ITT Engineered Valves
 ITT Fluid Technology Corporation
 Lancaster, Pa
 SHEET 1 OF 1

REV C
 A 60-021

SUPERSEDES:

